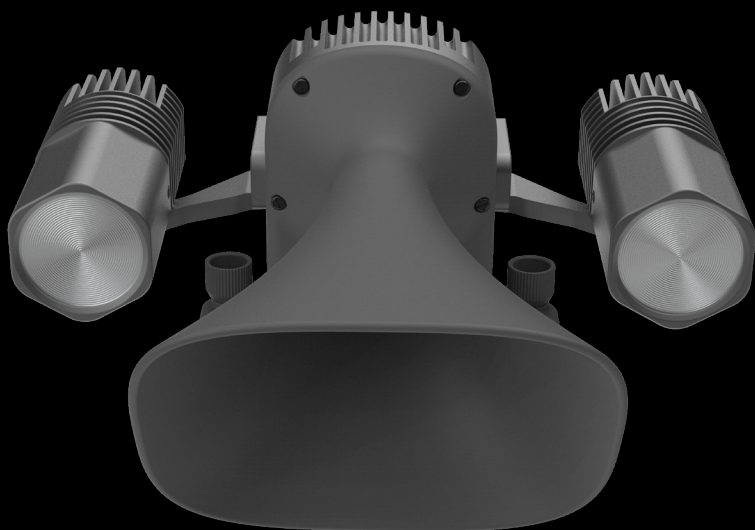


**JZ** 极至科技  
JIZHIKEJI



# JZ\_U3 SPEAKER & SPOTLIGHT



TEL: 13692368117



The JZ\_U3 is an integrated lighting and communication device with a lighting power of 30W and a weight of only 181 grams. It features a 14° spotlight for focused illumination, providing a brightness exceeding 24 Lux at a distance of 50 meters. Equipped with a single-axis stabilizing gimbal, it supports camera and gimbal linkage. The TTS (Text-to-Speech) function allows for text announcements with a maximum volume of 114dB at a distance of one meter, enabling effective broadcasting over a distance of more than 300 meters. It supports DJI Pilot 2 control, bilingual TTS loop playback, and multiple languages. It is compatible with DJI Mavic 3E and DJI Mavic 3T.

**114db**

Sound pressure at 1 meter

**14°**

Spotlight  
illumination

**200m**

Lighting distance

**300m**

Broadcast distance

### - Lighting illumination

Supports one-key switch, brightness adjustment, flash brightness, and flash frequency adjustment.

### - TTS text playback

Support text-to-speech playback.

### - Audio playback

Built-in storage, supports copying audio from a computer and uploading audio via a remote control.

### - Gimbal

It has a controllable gimbal that can adjust the angle from 0° to -90°. It also supports gimbal-camera coordination.



## APPLICATION AREAS



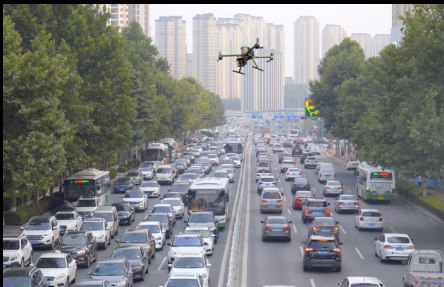
### Geological and seismic disaster rescue:

Translation: The M3 drone is equipped with the JZ\_U3 combined loudspeaker and lighting system, making it convenient for quick deployment and preparation for rescue missions, without the hassle of disassembly.



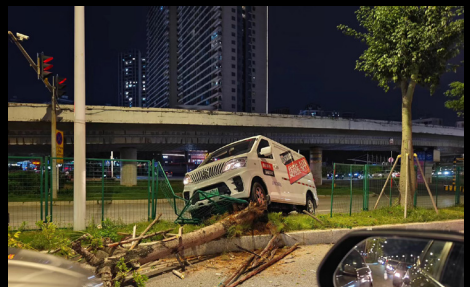
### Power restoration:

The drone equipped with the JZ\_U3 combined loudspeaker and lighting system allows easy adjustment of the light intensity and angle, providing complementary ground illumination.



### Traffic management:

Directing traffic flow, clearing accident scenes, and maintaining the continuity and fluidity of traffic.



### Vehicle accident rescue:

The drone equipped with the JZ\_U3 combined loudspeaker and lighting system provides emergency lighting at accident scenes. It is paired with a loudspeaker for traffic guidance to ensure smooth traffic flow.

## TECHNICAL PARAMETER

### Overall parameters

Product model	JZ_U3		
Electrical interface	DJI SDK		
Size	141.5 x 131.5x 60 mm		
Weight	181g		
Degree protection	IP4X		
Supported models	DJI Mavic 3E/Mavic 3T		
Maximum power consumption	30W		
Sound pressure at 1 meter	114db		
Broadcasting distance	300m		
Methods of voice	DJI Pilot 2		
Lighting modes	Combined lighting		
Lighting angle	14°		
Lighting distance	50m	100m	150m
Lighting area	113m <sup>2</sup>	471m <sup>2</sup>	1063m <sup>2</sup>
Central illuminance	24Lux	5.8Lux	2.5Lux
Gimbal	Single-axis stabilization gimbal		
Installation method	Quick-release screw		
Ambient temperature			
Working temperature	-10 °C to 50 °C		
Storage temperature	-20 °C to 60 °C		

## SUPPORTED MODELS

DJI Mavic 3E, Mavic 3T

## DJI PILOT

JZ U3 SPEAKER & SPOTLIGHT SYSTEM with DJI Pilot 2. By using DJI Pilot 2 to control the drone and the U3 loudspeaker and lighting system, there is no need for third-party apps, ensuring flight safety.

## ABOUT US

[www.jzdrone.com](http://www.jzdrone.com)

Guangzhou Jizhi Technology Co., Ltd. adheres to the concept of "extreme to the extreme", pursues the ultimate, continuously innovates, and is committed to creating world-class drone solution products. We focus on exploring refined applications in the drone industry, addressing the pain points of industry users in various practical scenarios, and providing strong empowerment capabilities for public safety and various industries. The company focuses on the research and development, production, and manufacturing of drone loads and surrounding supporting facilities. R&D personnel account for over 70%, with technical teams from various professional fields. They have years of R&D and practical experience in the drone industry,